

Professional Series Modular Kennels



Why TK Pro-Series?

After years of using major branded and custom-built kennels, we found that the powder coat and galvanized finishes currently being used just don't last in today's average dog kennel environment. After extensive research and testing, we have determined that hot dip galvanizing the complete panel after welding and assembly is the most protective means to prevent corrosion and rusting of the kennel panels. This finishing process coats and seals the **outside** as well as the **inside** of every surface. The key is to apply a galvanized coating of 5 mills thick or more which will extend the life expectancy to 100+ years according to the American Galvanizing Association, www.galvanizeit.org. **Bridges, street sign posts** and **guardrails** are examples of other products coated with this process and thicknesses.

Other kennels will claim to be galvanized after welding, but close inspection will reveal that the welded joints have just been hand painted with galvanized paint. Painting the welds simply coats the outside of the surface with a very thin finish and leaving the inside of the weld and frame with no protection at all from condensation or moisture. The stock tubing they use may be hot dipped but with a very thin coating which can easily wear through during normal use. We have found powder coating to be less durable than even the cheap galvanized kennels, as it holds up no better than any ordinary paint.

Superior Design

Each Pro-Series kennel panel utilizes 1 ¼" **square tubing** frame with **welded mitered corners** for superior strength and appearance. The top mitered corner design also eliminates all dirt and debris from entering the top of the frame and corroding it from the inside out. Most of the other major brand kennels have frames that are wide open on top.



Using **square tube** kennel frames provides a more positive means to secure two panels together. Our square frame kennels are bolted together using a **stainless steel bolt assembly** that is designed to wrap around each frame for increased strength, unlike round tube framed kennels which use a round clamp system which often become loose and rotate. Our bolt assembly includes all stainless steel bolts and vibration proof stainless steel ny-lock nuts. We chose this design due to our own experience with brackets that loosen and fail.

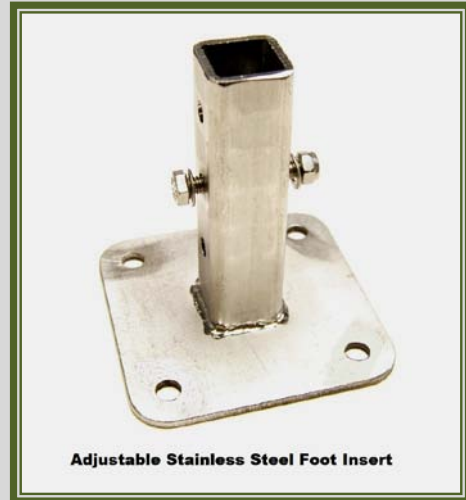


The square tubing frame holds 8 gauge 2x4 welded wire mesh. The inside of the frame is pre-drilled around the entire inner perimeter; then **each end of the wire mesh is inserted into the pre-drilled frame** and welded around **every wire**. This is the most secure way to fasten the wire mesh to the frame and eliminates exposed sharp or jagged edges which could injure your pet. This design also provides a quiet kennel with no rattling of the fence like other chain link versions. Most other brands just weld the wire mesh to the surface of the frame every six to twelve inches which means some of the wire mesh ends can be bent out and injure your pet.



The kennels are raised off the ground with a 2" leg for easy spray out cleaning and also have a **plastic leg insert** to help with wear and improve corrosion resistance.

The optional **Stainless Steel foot** replaces the plastic leg insert and allows the side panels to be adjustable from 2" – 3" – 4" above grade for easy cleaning and sloped concrete installations. The large 3 ½" square foot also allows for bolting the kennels to the concrete and works great for setting up the kennels on soft surfaces like grass or pea stone.



Each door panel has a 2-foot door which swings **in-or-out**. The door panel is also **reversible** offering a right or left handed installation. The door hinge design allows for the door to be **removed** by lifting it straight up but only if the door is opened to at least 90 degrees, this is a handy feature for cleaning. These unique features truly make the TK Pro-Series a versatile kennel system.



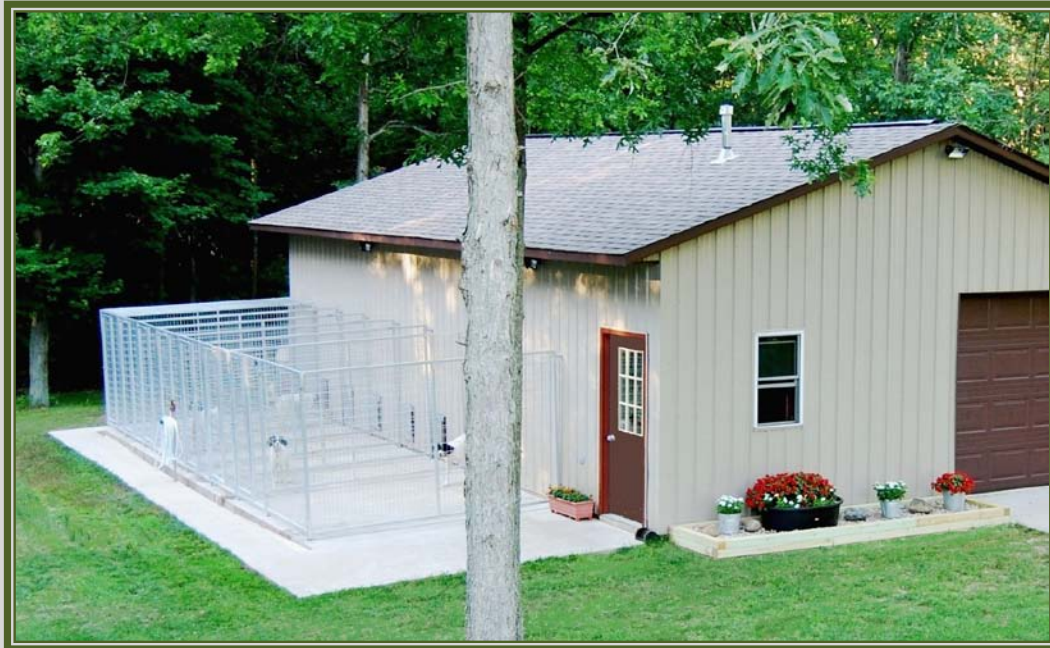
The **spring loaded** door latch is **solid stainless steel** with an internal stainless spring that holds the latch shut and prevents your pet from opening the door. In addition to having a handle on both sides for ease of use, the latch is also **lockable** for your pet's safety. The ease of one handed door opening during feeding time as well as doors that open in or out will save you time as well as the frustration of trying to open the door with feed bowls in your hand.



Price List:

Pro-Series Hot Dipped Galvanized:

| Part number | Description | Retail |
|-------------|--------------------------------------|----------|
| 10022G | 4'X6' Door Panel | \$152.00 |
| 10005G | 4'X6' End Panel | \$90.00 |
| 10045G | 5'X6' Door Panel | \$163.00 |
| 10046G | 5'X6' End Panel | \$99.00 |
| 10024G | 5'X6' Side Panel | \$104.00 |
| 10086G | 6'X6' Side Panel | \$157.00 |
| 10063G | 8'X6' Side Panel | \$162.00 |
| 10010G | 10'X6' Side Panel | \$179.00 |
| 10075G | 4'X10' Top Panel | \$163.00 |
| 10077G | 5'X10" Top Panel | \$174.00 |
| 10057 | 3" Bolt Assembly SS | \$3.50 |
| 10058 | 4" Bolt Assembly SS | \$3.50 |
| 10092 | Adjustable Stainless Foot | \$18.25 |
| 20000G | Complete 4'X10' free-standing kennel | \$605.00 |
| 20001G | Complete 5'X10' free-standing kennel | \$625.00 |



T K Products LLC.
4413 128th Street, Allegan, MI 49010
616-403-3469
www.TKProductsLLC.com