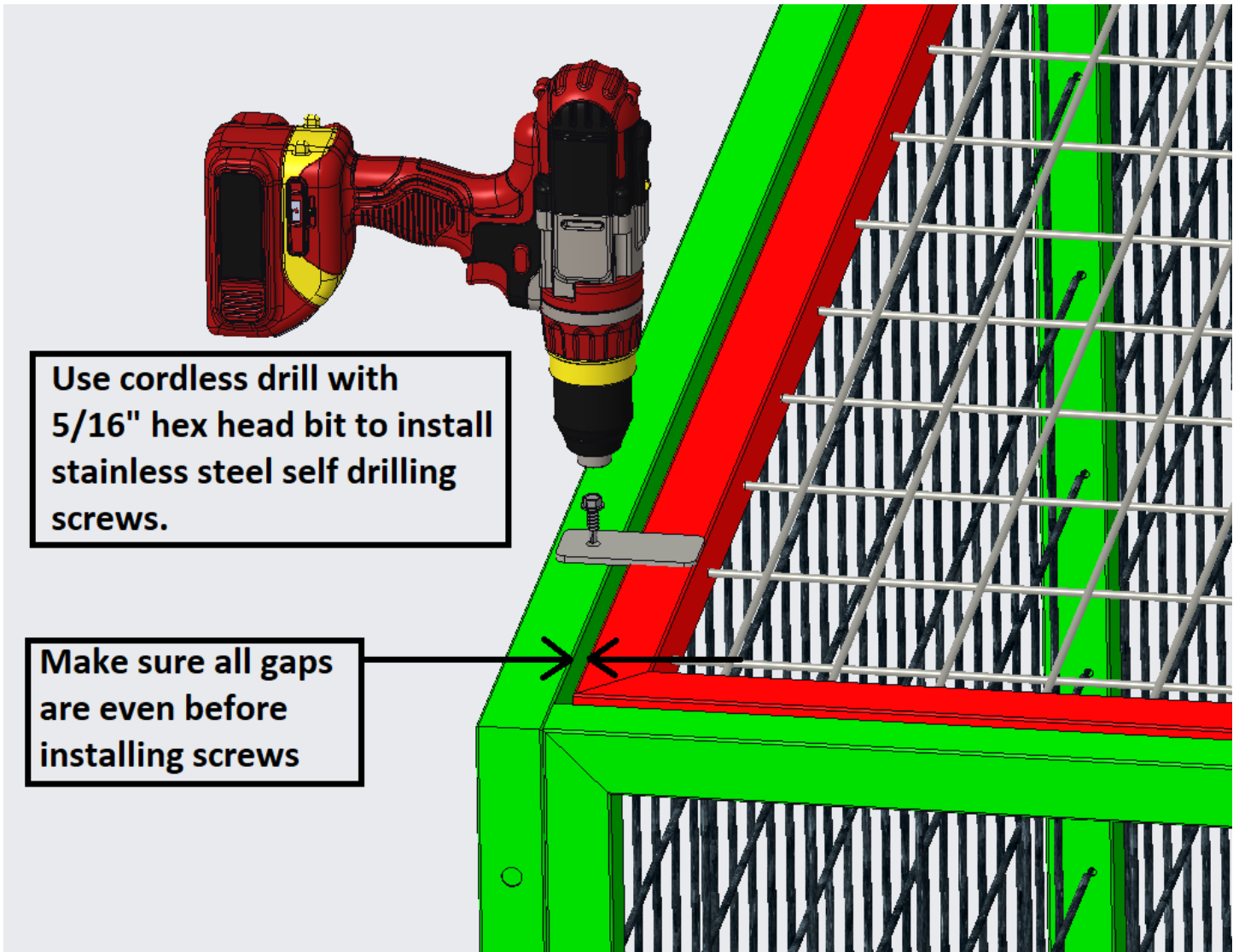
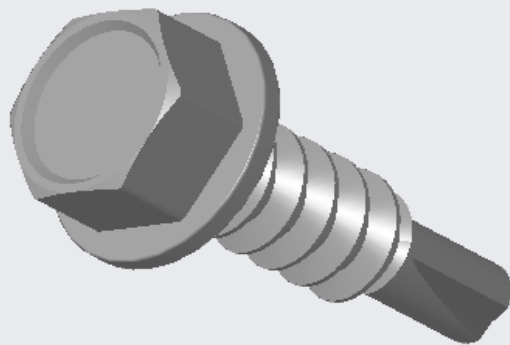


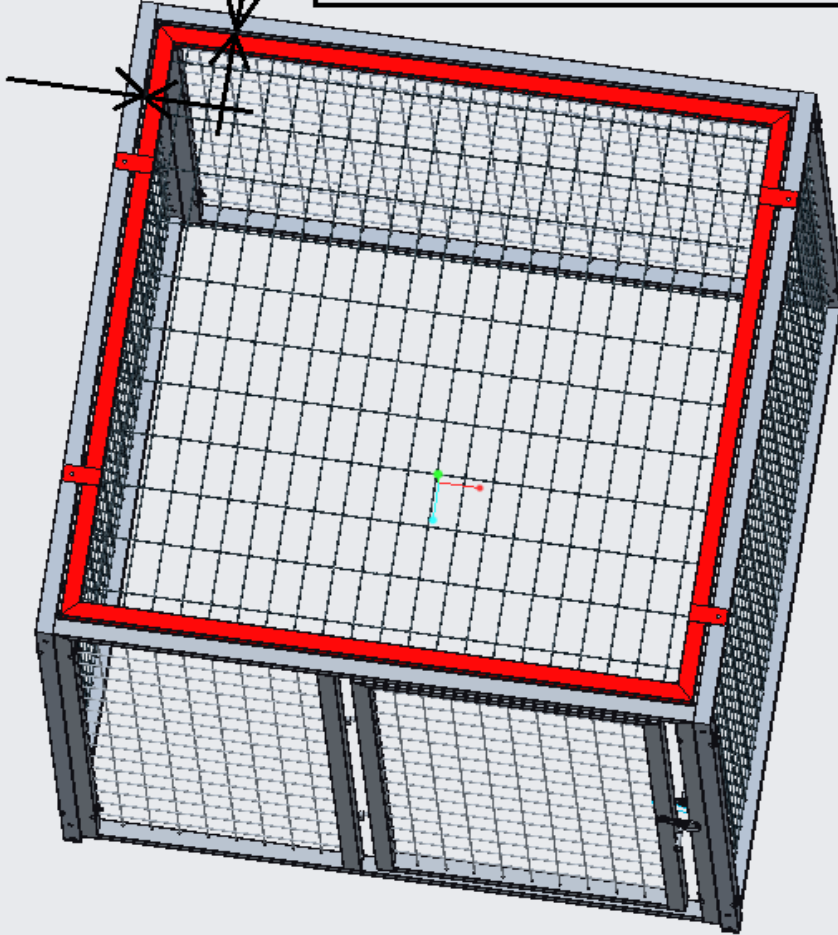
# Top Mesh Panel Installation



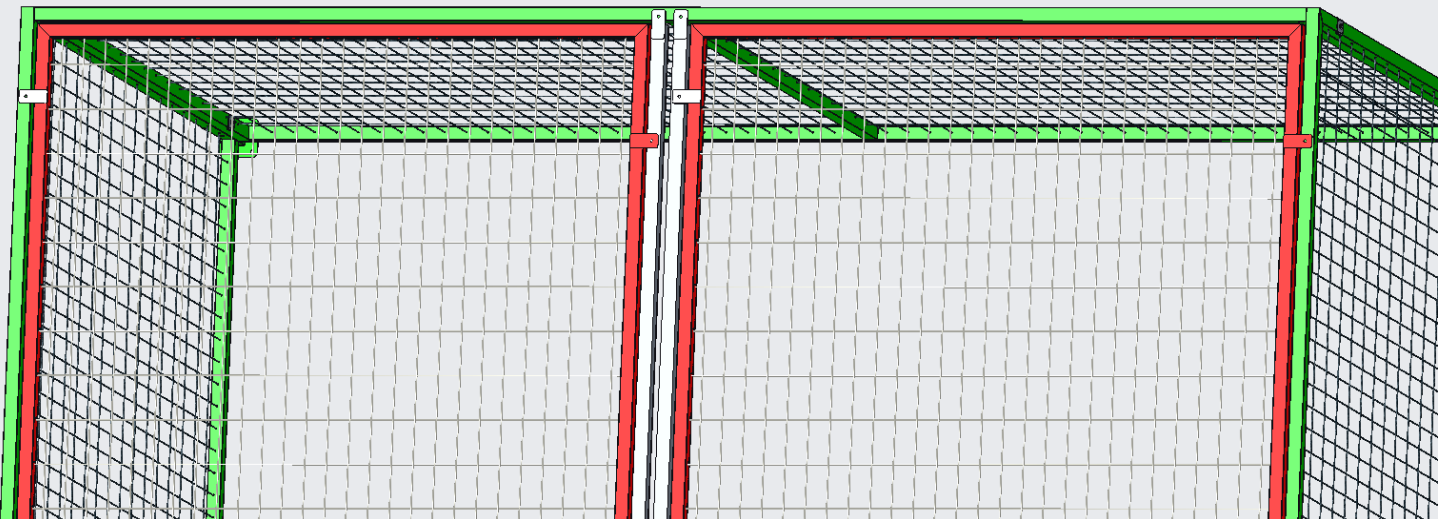
**5/16" Hex Head Self Drilling Screw**



**Make sure all top panels are spaced evenly in both directions before installing self drilling screws.**



**10'x10' Kennels require two Top Panel Center Supports and two 5x10 Top Mesh Panels**



**10'x10' Kennel with  
Top Mesh Panels**

