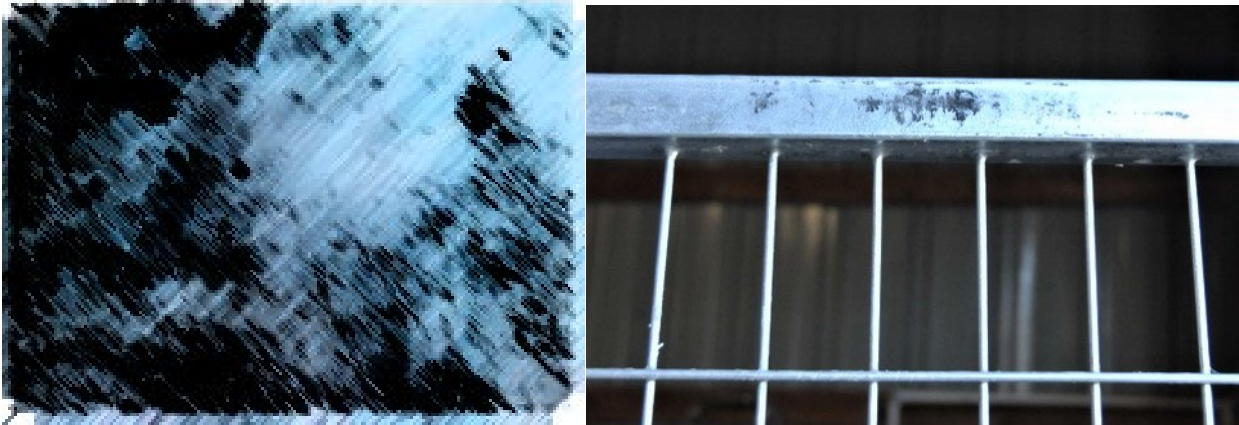


# Dark spots/Flux staining/Ash Inclusions- A byproduct of the galvanizing process.

General comments: Acceptable, some spots can be removed. A sound finish is typically under the discoloring.



Smuts of dirt may be picked up on the surface of the galvanized coating from floors and trucks or from contact with other articles. Most smuts are readily washed off to reveal a sound coating and are not harmful. Small spots of surface rust are also common and are just on the surface and do not affect the longevity or finish below.

Where a flux blanket is used in the galvanizing process, stale flux may adhere to the surface of the work during immersion and appear as a black inclusion in the coating. Black stains or deposits of flux picked up on the surface when the object is withdrawn from galvanizing the bath do not warrant rejection.